

6000 Series Flush Fire Dept. Inlet Connections

GUARDIAN
FIRE EQUIPMENT, INC.



Residential



6002



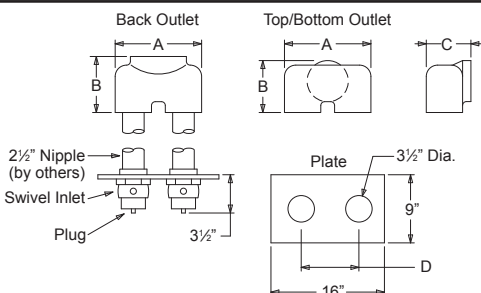
6014/6015



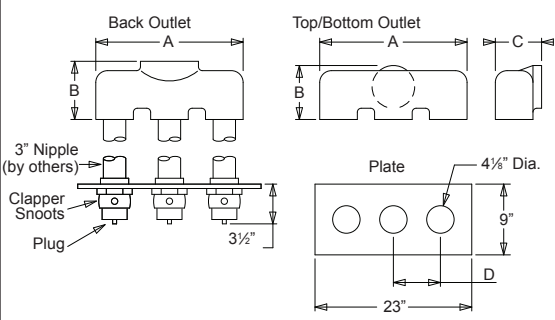
6016/6017



6024-6029



6034-6039



Function

- Used as auxiliary connections through which the fire department can pump water to supplement existing water supplies
- Provides 250 GPM flow (minimum), per 2 1/2" inlet

Features/Components

- **Single** inlet connections incorporate a straight-thru, non-clappered design with female NPT outlets
- **Two-way** inlet connections feature brass bodies (angle or straight pattern), with integral drop-clapper inlets and female NPT outlets
- **Three-way** inlet connections feature brass bodies (angle or straight pattern), with 3" female NPT x 2 1/2" female hose thread clapper-snoot inlets and female NPT outlets
- **Standard components, all connections:**
Female hose thread swivel inlets, plugs with chains and identification plate
- Cast brass construction*, standard

*Optional brass finishes on exposed surfaces, add suffix to model no.
-B Polished; -C Rough Chrome Plated; -D Polished Chrome Plated

Single Inlet Connections

Model No.	6002	6014	6015	6016	6017
Outlet	1 1/2"	2 1/2"	3"	2 1/2"	3
Inlet	1 1/2"	2 1/2"	2 1/2"	2 1/2"	2 1/2"
Plate	4 1/2" O.D.	7" O.D.	7" O.D.	6" x 7"	6" x 7"

Identification Plate Lettering: **AUTO SPKR**

Two and Three-Way Connections

Model No.	Outlet	Size	Clappers	A	B	C	D
6024	Back	4" x 2 1/2" x 2 1/2"	2	11 5/8"	7 7/8"	---	7"
6025	Bottom	4" x 2 1/2" x 2 1/2"	2	12 1/8"	6 7/8"	7 1/8"	7"
6026	Top	4" x 2 1/2" x 2 1/2"	2	12 1/8"	6 7/8"	7 1/8"	7"
6027	Back	6" x 2 1/2" x 2 1/2"	2	11 1/8"	7 1/8"	---	7 5/8"
6028	Bottom	6" x 2 1/2" x 2 1/2"	2	12 1/8"	7"	7 1/8"	7 5/8"
6029	Top	6" x 2 1/2" x 2 1/2"	2	12 1/8"	8"	9"	7 5/8"
6034*	Back	4" x 2 1/2" x 2 1/2" x 2 1/2"	3	17 3/8"	6 1/8"	---	7"
6037	Back	6" x 2 1/2" x 2 1/2" x 2 1/2"	3	17 3/8"	6 1/8"	---	7"
6038	Bottom	6" x 2 1/2" x 2 1/2" x 2 1/2"	3	17 3/8"	7 5/8"	7 1/8"	7"
6039	Top	6" x 2 1/2" x 2 1/2" x 2 1/2"	3	17 3/8"	7 5/8"	7 1/8"	7"

Identification Plate Lettering:

- **AUTO SPKR**
- **STANDPIPE**
- **AUTO SPKR & STANDPIPE**
- **DRY STANDPIPE**

*With steel body only.

Notes

- Pipe nipples for connecting bodies to swivel inlets by others
- Always specify hose threads and identification plate lettering
- Contact Guardian for current approvals and special requirements