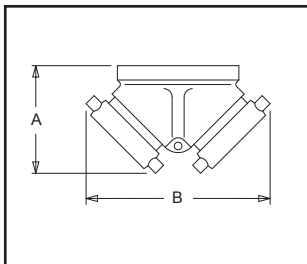
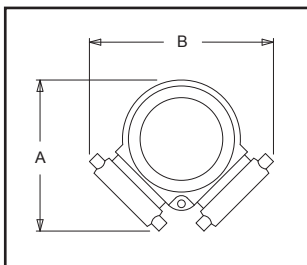
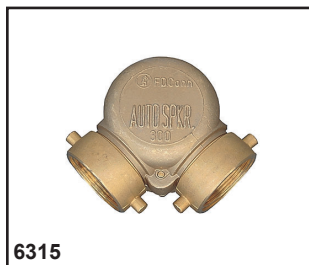


6300 Series Fire Dept. Inlet Connections - Bodies

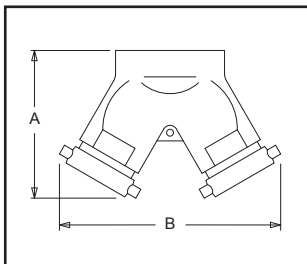
GUARDIAN
FIRE EQUIPMENT, INC.



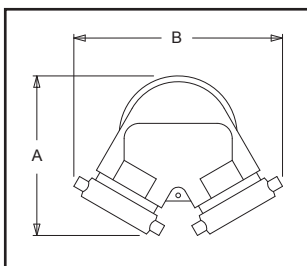
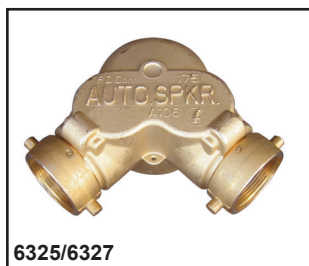
6314



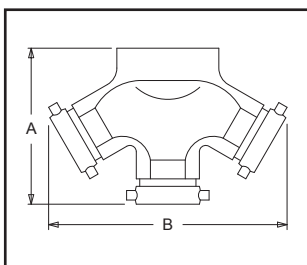
6315



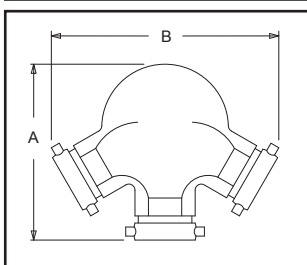
6324/6326



6325/6327



6334/6336



6335/6337

Function

- Used as auxiliary connections through which the fire department can pump water to supplement existing water supplies
- Provides 250 GPM flow (minimum), per 2½" inlet

Features/Components

- **Two and three-way** inlet connections feature clappered brass bodies (straight or angle pattern), with female hose thread swivel inlets and female NPT outlets
- Cast brass construction*, standard

*Optional brass finishes, add suffix to model no.

-B Polished; -C Rough Chrome Plated; -D Polished Chrome Plated

Two and Three-Way Connections

Model No.	Outlet	Size	Clappers	A	B
6314*	back	4" x 2½" x 2½"	1	5½"	8⅛"
6315*	angle	4" x 2½" x 2½"	1	8⅛"	8¾"
6324	back	4" x 2½" x 2½"	2	7⅞"	11⅒"
6325	angle	4" x 2½" x 2½"	2	8⅝"	11⅒"
6326	back	6" x 2½" x 2½"	2	7¼"	10½"
6327	angle	6" x 2½" x 2½"	2	10"	10½"
6334	back	4" x 2½" x 2½" x 2½"	3	10½"	13¾"
6335	angle	4" x 2½" x 2½" x 2½"	3	11½"	14½"
6336	back	6" x 2½" x 2½" x 2½"	3	10½"	13¾"
6337	angle	6" x 2½" x 2½" x 2½"	3	11½"	14½"

Body Lettering:

- AUTO SPKR
- STANDPIPE

* Auto Spkr lettering only

Notes

- Refer to page 63 for connection accessories
- Always specify hose threads and body lettering
- Contact Guardian for current approvals and special requirements