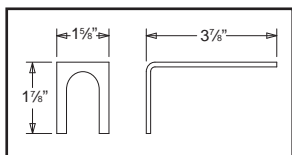
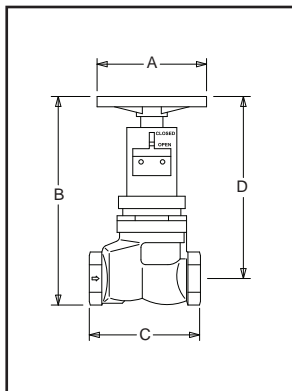
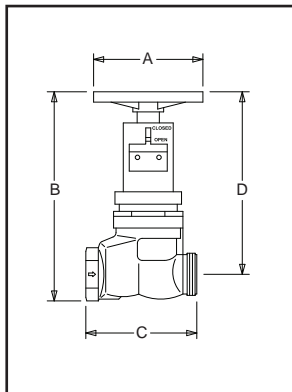
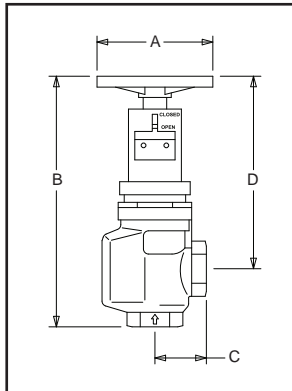
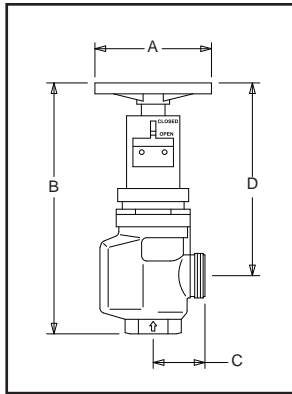
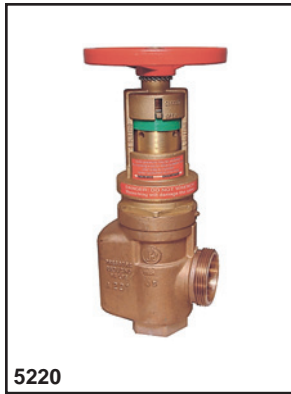


5200 Series Pressure Regulating Valves (Field-Adjustable)

GUARDIAN
FIRE EQUIPMENT, INC.



Function

- Used to regulate and control high pressures in standpipe and sprinkler systems

Features/Characteristics

- Constant pressure regulation under residual (flowing) and static (non-flowing) conditions
- Tamper-resistant pressure adjustment setting (special setting tool and charts provided with each valve)
- Bonnet tab indicates valve position as “open” or “closed”
- Valve seat acts as checking device and closes when inlet pressures drop below selected static outlet pressures
- Optional monitor switch adapter bracket* permits valve supervision by electrical means
- Available as angle or in-line (straight) type, 2½” size
- Female pipe inlet x female pipe or male hose thread outlet
- Large operating handwheel
- Cast brass body** with brass and stainless steel internals

*Add suffix **-bkt1** to model no. for bracket

Add suffix **-C to model no. for rough chrome plated finish

Model No.	Size	Outlet	A	B	C	D
5220	2½" x 2½"	Male NST	7⅞"	17⅞"	3½"	14⅞"
5225	2½" x 2½"	Female NPT	7⅞"	17⅞"	3⅝"	14⅞"
5230	2½" x 2½"	Male NST	7⅞"	16"	8"	14¾"
5235	2½" X 2½"	Female NPT	7⅞"	16"	8"	14¾"

Accessories

- **Model 9390** Supervisory switch, refer to page 92
- **Model 9465** Pressure gauge, refer to page 93
- **Model 9325** Water flow detector switch, refer to page 92
- **Series 9200** Test and drain connections, refer to pages 90/91
- **Model 3340/3345** Drain riser connection, refer to page 31 for snoots and page 63 for **Model 6404** plug
- **Model 5275** Adjustable pressure relief valve, ¾" brass (or **Model 5280** fixed pressure type)

Contact factory for current UL listing and special requirements

****Important: Specify Hose Threads****