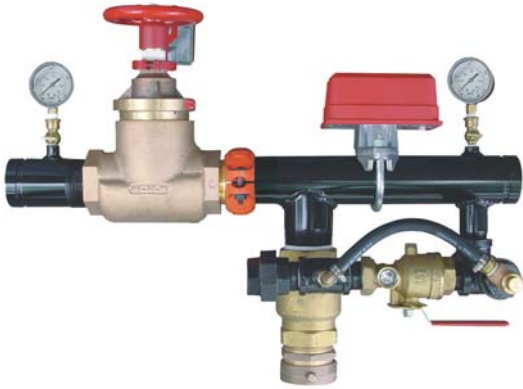


9500 Series Floor Control and Test Module

GUARDIAN
FIRE EQUIPMENT, INC.



9527 2 1/2" Straight Pattern Module with Factory-Set Valve

Function

Provide zone control for sprinkler line.

Advantages

- **Testing:** Pressure Regulating Valves can be flow-tested without shutting down sprinkler system (as per NFPA 25).
- **Installation:** Modules are factory-assembled, effectively reducing installation costs and time.

Standard Features

- Pressure Regulating Valve with supervisory switch
- Grooved pipe ends
- Water flow detector
- Liquid-filled pressure gauges on inlet/outlet
- Hose test connection with valve and cap
- Test and drain valve with pressure relief by-pass

Available Models

Model 9519 1 1/2" Angle pattern module with factory-set pressure regulating valve

Model 9527 2 1/2" Straight pattern module with choice of factory-set or field-adjustable pressure regulating valve

Model 9529 2 1/2" Angle pattern module with choice of factory-set or field-adjustable pressure regulating valve

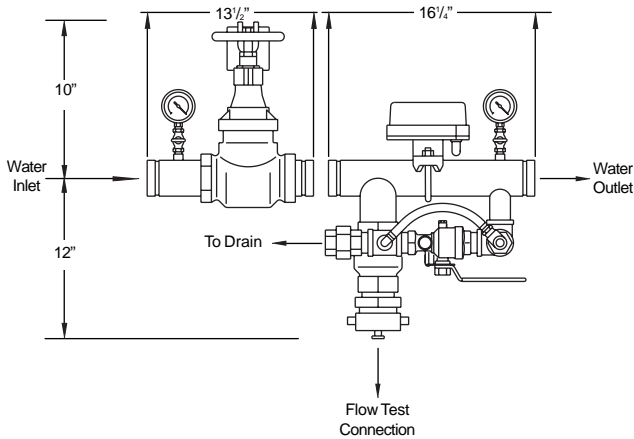
Note: Modules are assembled to flow left to right or right to left, as required

Accessories For Testing

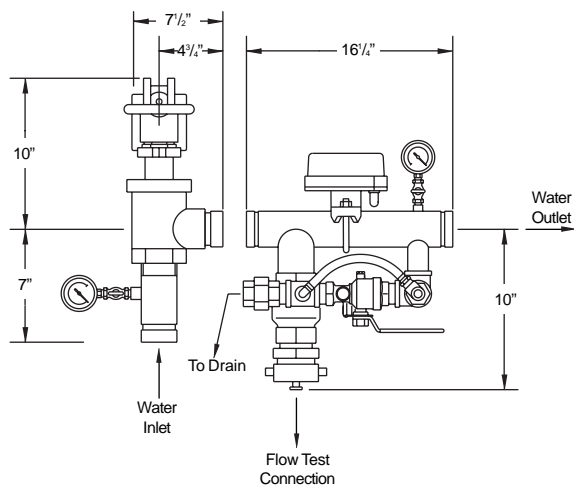
Models 3442/3444 1 1/2" or 2 1/2" Double jacket hoses for Flowmeter and Drain Riser connections, refer to page 32 and advise lengths required

Model 8225 Universal spanner wrench, refer to page 85

Models 9410/9415 1 1/2" or 2 1/2" Flowmeter, refer to page 93



9527 2 1/2" Straight Pattern Module



9529 2 1/2" Angle Pattern Module