



**Flowmeter - Venturi Type**

- Used to perform flow and pressure tests on fire pumps, sprinkler system valves and pressure regulating hose valves (as per NFPA 13, 14 and 25 requirements)
- Lightweight inline design incorporates a precision machined all-aluminum venturi flow tube coupled with a full flow gate valve. Direct read gauges for flow and pressure (0-300 psi). Base and carrying handle are also aluminum.

*2 1/2" aluminum gate valve is swivel inlet type (NST) and can be easily disconnected for use in other test applications*

**Model 9415** 2 1/2" x 2 1/2" 150-500 gpm



9415

**Swivel Diffuser**

- Used to perform flow tests on hydrants and diffuse stream
  - Female hose thread swivel connection, forged aluminum body, brass pressure tube with 0-100 psi/1680 gpm gauge
- Optional plastic case, add suffix -CS to model no.*

**Model 9420** 2 1/2"



9420

**Pitot Tube Kit**

- Used to perform flow tests
- Chrome plated brass handle, with two injection molded blades (straight/notched), quick-connect fitting, 0-160 psi liquid-filled pressure gauge, computation table and case

**Model 9425** 1 1/2" x 1 1/2"



9425

**Discharge Elbow**

- Used to re-direct water stream from hydrant
  - Female swivel hose thread x male hose thread\*
- Specify 30°, 45° or 90° angle pattern*

**Model 9430** 2 1/2" x 2 1/2"



9430

**In-Line Gauge**

- Used to measure static and residual pressures
- Female swivel hose thread x male hose thread, brass\* tube with 0-200 psi liquid-filled pressure gauge

**Model 9440** 1 1/2" x 1 1/2"

**Model 9445** 2 1/2" x 2 1/2"



9440/9445

**Cap Gauge**

- Used to measure static pressures
- 2 1/2" female hose thread brass\* cap, with 0-200 psi liquid-filled pressure gauge and pet cock

**Model 9450** 1 1/2"

**Model 9455** 2 1/2"



9450/9455

**Pressure Gauge**

- 2 1/2" 304 stainless steel case, liquid-filled with brass internals, 1/4" male NPT connection

**Model 9460** 0-30 PSI

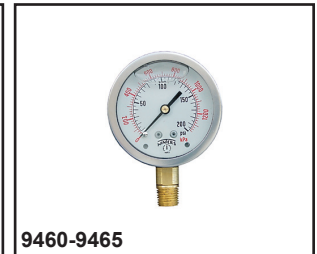
**Model 9463** 0-160 PSI

**Model 9461** 0-60 PSI

**Model 9464** 0-200 PSI

**Model 9462** 0-100 PSI

**Model 9465** 0-300 PSI



9460-9465

*Alternate range gauges may be substituted for models 9430-9450*

\* Optional brass finishes, add suffix to model no.

-B - Polished Brass, -C - Rough Chrome Plating, -D - Polished Chrome Plating