



Function

- Used to conduct flow tests on fire pumps

Features/Components

- **Four & six-way** test connections feature brass bodies (straight, angle or end pattern) with female NPT inlets and outlets
- **Standard components, all connections:**
Hydrant outlet snoots (3" female NPT x 2½" male NPT), N.R.S. loose bonnet gate valves (2½" female NPT x 2½" male hose thread), caps with chains and identification plate lettered "FIRE PUMP TEST"
- Cast brass construction*, standard

*Optional brass finishes on exposed surfaces, add suffix to model no.
-B Polished; -C Rough Chrome Plated; -D Polished Chrome Plated

Four and Six-Way Connections

Model No.	Inlet	Size	Pump Size (gpm)	A	B	C	D
6743	Angle	6" x 2½" square, 4-way	1000	---	---	---	---
6744	Back	6" x 2½" in-line, 4-way	1000	23⅝"	5⅝"	---	---
6745	Angle	6" x 2½" in-line, 4-way	1000	23⅝"	---	7⅝"	---
6746*	End	6" x 2½" in-line, 4-way	1000	---	---	---	25"
6764*	Back	8" x 2½" in-line, 6-way	1500	44½"	11⅝"	---	---
6765*	Angle	8" x 2½" in-line, 6-way	1500	44½"	---	10⅞"	---
6766*	End	8" x 2½" in-line, 6-way	1500	---	8⅝"	---	45"

*Available with steel body (-ST) only

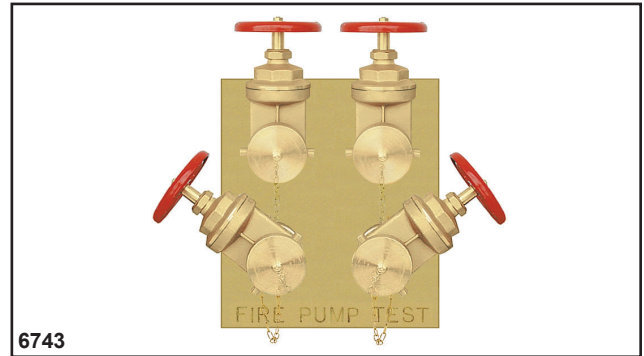
Component Variations

Suffix

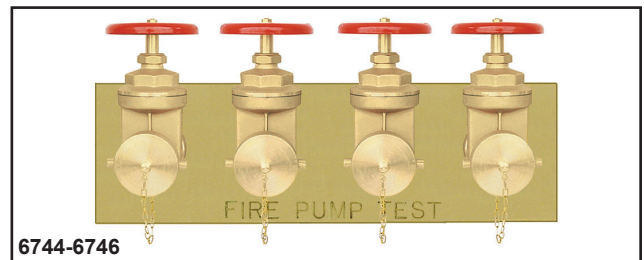
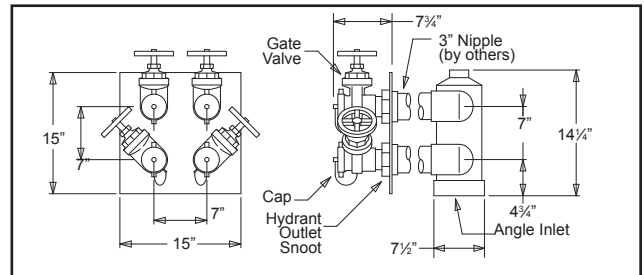
- ST Bodies fabricated of schedule 40 steel (straight, angle or end pattern) with female NPT inlets and outlets
All steel bodies furnished with 2½" female NPT outlets and 7" center lines
 - 1 Standard components, except hydrant outlet snoots (3" female NPT x 2½" male hose thread), and less valves
 - 2 Standard components, except hydrant outlet snoots (3" female NPT x 2½" male hose thread), and N.R.S. swivel inlet gate valves (2½" female hose thread x 2½" male hose thread)
Swivel inlet gate valves always furnished cast brass
- To specify variations, add suffix(es) to model no.**

Notes

- Always specify hose threads
- Pipe nipples for connecting bodies to hydrant snoots by others
- Contact Guardian for current approvals and special requirements



6743



6744-6746

