



GUARDIAN

FIRE EQUIPMENT, INC.
MIAMI, FL

Ph. 800.327.6584 • Fax 800.827.3869

DETAIL AND SUBMITTAL SHEET

6000 Series - Flush Fire Dept. Inlet Connections

Project/Location: _____ Date: _____

Architect/Engineer: _____

Contractor: _____

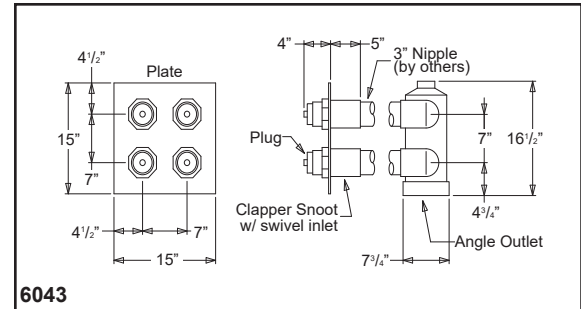
Appropriate Selection

Used as auxiliary connections through which the fire department can pump water to supplement existing water supplies. Provides 250 GPM flow (minimum), per 2 1/2" inlet.

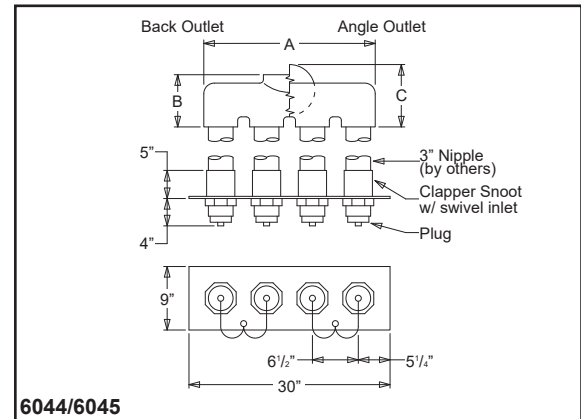
Four and six-way inlet connections feature brass bodies (angle, straight or end pattern), with female NPT inlets and outlets.

Standard components, all connections:

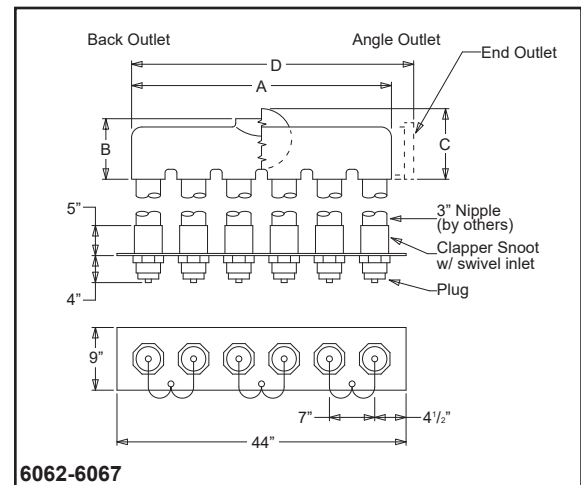
3" Female NPT x 2 1/2" Female hose thread clapper-snoot inlets, plugs with chains and identification plate. Cast brass construction, standard.



6043



6044/6045



6062-6067

Four and Six-Way Connections						
Model No.	Outlet	Size	A	B	C	D
<input type="checkbox"/> 6043	Angle	6" x 2 1/2" square, 4-way	---	---	---	---
<input type="checkbox"/> 6044	Back	6" x 2 1/2" in-line, 4-way	23 3/4"	5 3/4"	---	---
<input type="checkbox"/> 6045	Angle	6" x 2 1/2" in-line, 4-way	23 3/4"	---	7 1/8"	---
<input type="checkbox"/> 6062**	Back	6" x 2 1/2" in-line, 6-way	44 1/2"	9 5/8"	---	---
<input type="checkbox"/> 6063**	Angle	6" x 2 1/2" in-line, 6-way	44 1/2"	---	8 3/4"	---
<input type="checkbox"/> 6064**	End	6" x 2 1/2" in-line, 6-way	---	6 5/8"	---	44 1/2"
<input type="checkbox"/> 6065**	Back	8" x 2 1/2" in-line, 6-way	44 1/2"	11 5/8"	---	---
<input type="checkbox"/> 6066**	Angle	8" x 2 1/2" in-line, 6-way	44 1/2"	---	10 7/16"	---
<input type="checkbox"/> 6067**	End	8" x 2 1/2" in-line, 6-way	---	8 5/8"	---	45"

Identification Plate Lettering			
<input type="checkbox"/> AUTO SPKR	<input type="checkbox"/> AUTO SPKR & STANDPIPE		
<input type="checkbox"/> STANDPIPE	<input type="checkbox"/> DRY STANDPIPE		

** With steel bodies only

Dimensions are for threaded connections

Optional Finish: -B Polished Brass
 -C Rough Chrome Plated
 -D Polished Chrome Plated

Threads: NST
 Other