



GUARDIAN

FIRE EQUIPMENT, INC.
MIAMI, FL

Ph. 800.327.6584 • Fax 800.827.3869

DETAIL AND SUBMITTAL SHEET

6200 Series - Free-Standing Fire Dept. Inlet Connections

Project/Location: _____

Date: _____

Architect/Engineer: _____

Qty: _____

Contractor: _____

Appropriate Selection

Used as auxiliary connections through which the fire department can pump water to supplement existing water supplies. Provides 250 GPM flow (maximum), per 2 1/2" inlet.

Single - inlet connections incorporate a straight-thru, non-clappered design with female NPT outlets.

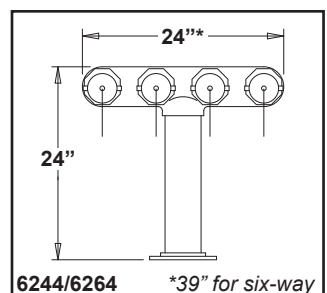
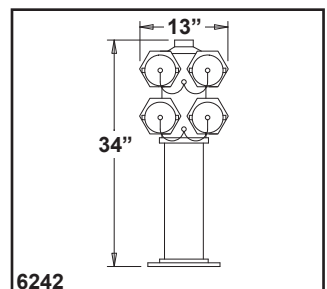
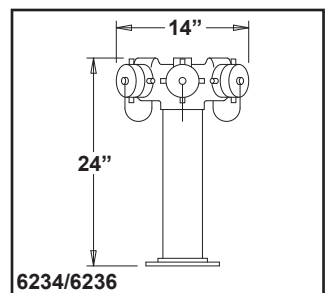
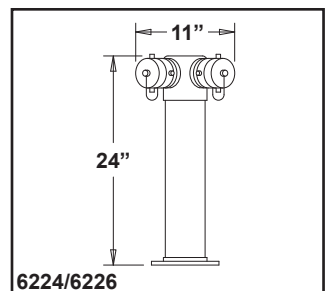
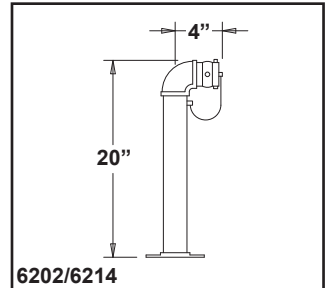
Two and three-way - inlet connections feature brass bodies with integral drop-clapper inlets and female NPT outlets.

Four-way square and four-way in-line - inlet connections feature brass bodies with female NPT inlets and outlets

Six-way - inlet connections feature steel bodies with female NPT inlets and outlets

Standard components, all connections:

Female hose thread swivel inlets (models 6242/6264 with clapper-snoots), plugs with chains, 18" cover sleeve (model 6202/6214 with tube and elbow), and identification plate. Cast brass construction, standard.



Single, Two, Three, Four and Six-way Connections				
Model No.	Size	Clappers	Overall Height	Radius of Body Swing
<input type="checkbox"/> 6202	1 1/2" x 1 1/2"	---	20"	4"
<input type="checkbox"/> 6214	2 1/2" x 2 1/2"	---	20"	4"
<input type="checkbox"/> 6224	4" x 2 1/2" x 2 1/2"	2	24"	6 3/4"
<input type="checkbox"/> 6226	6" x 2 1/2" x 2 1/2"	2	24"	7 1/4"
<input type="checkbox"/> 6236	6" x 2 1/2" x 2 1/2" x 2 1/2"	3	24"	7"
<input type="checkbox"/> 6234	4" x 2 1/2" x 2 1/2" x 2 1/2"	3	24"	7"
<input type="checkbox"/> 6242	6" x 2 1/2" square, 4-way	4	34"	7 1/2"
<input type="checkbox"/> 6244	6" x 2 1/2" in-line, 4-way	4	24"	12 1/2"
<input type="checkbox"/> 6264*	8" x 2 1/2" in-line, 6-way	6	26 1/2"	19"

Identification Plate Lettering	
<input type="checkbox"/> AUTO SPKR	<input type="checkbox"/> AUTO SPKR & STANDPIPE
<input type="checkbox"/> STANDPIPE	<input type="checkbox"/> DRY STANDPIPE

Optional Finish: -B Polished Brass
 -C Rough Chrome Plated
 -D Polished Chrome Plated

Threads:
 NST
 Other

*Note - Steel body painted black for cast brass & polished brass finish
 Steel body painted silver for rough chrome & polished chrome finish

Contact factory for current listings and approvals