



GUARDIAN

FIRE EQUIPMENT, INC.
MIAMI, FL

Ph. 800.327.6584 • Fax 800.827.3869

DETAIL AND SUBMITTAL SHEET

6300 Series - Fire Dept. Inlet Connections - Bodies

Project/Location: _____

Date: _____

Architect/Engineer: _____

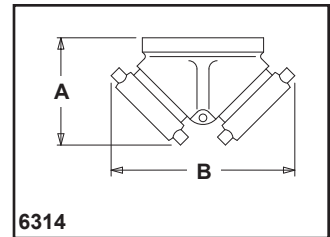
Qty: _____

Contractor: _____

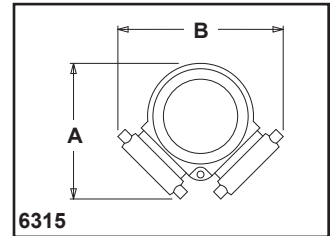
Appropriate Selection

Used as auxiliary connections through which the fire department can pump water to supplement existing water supplies. Provides 250 GPM flow (minimum), per 2 1/2" inlet.

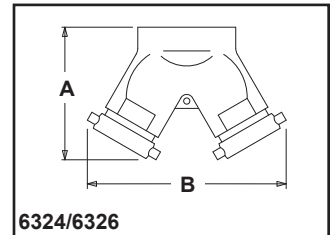
Two and three-way - inlet connections feature clappered brass bodies (straight or angle pattern), with female hose thread swivel inlets and female outlets. Cast brass construction, standard.



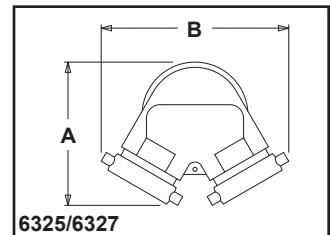
6314



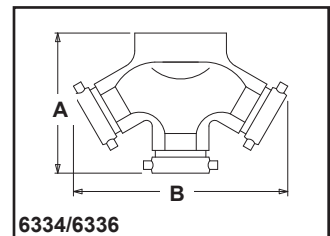
6315



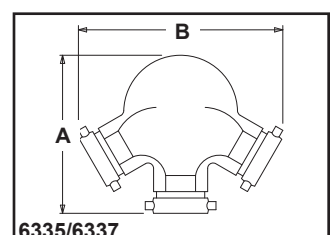
6324/6326



6325/6327



6334/6336



6335/6337

Two and Three-Way Connections					
Model No.	Outlet	Size	Clappers	A	B
<input type="checkbox"/> 6314*	Back	4" x 2 1/2" x 2 1/2"	1	5 1/2"	8 1/8"
<input type="checkbox"/> 6315*	Angle	4" x 2 1/2" x 2 1/2"	1	8 1/8"	8 3/4"
<input type="checkbox"/> 6324	Back	4" x 2 1/2" x 2 1/2"	2	7 9/32"	11 21/32"
<input type="checkbox"/> 6325	Angle	4" x 2 1/2" x 2 1/2"	2	8 31/64"	11 21/32"
<input type="checkbox"/> 6326	Back	6" x 2 1/2" x 2 1/2"	2	7 1/4"	10 1/2"
<input type="checkbox"/> 6327	Angle	6" x 2 1/2" x 2 1/2"	2	10"	10 1/2"
<input type="checkbox"/> 6334	Back	4" x 2 1/2" x 2 1/2" x 2 1/2"	3	10 1/2"	13 3/4"
<input type="checkbox"/> 6335	Angle	4" x 2 1/2" x 2 1/2" x 2 1/2"	3	11 1/2"	14 1/2"
<input type="checkbox"/> 6336	Back	6" x 2 1/2" x 2 1/2" x 2 1/2"	3	10 1/2"	13 3/4"
<input type="checkbox"/> 6337	Angle	6" x 2 1/2" x 2 1/2" x 2 1/2"	3	11 1/2"	14 1/2"

Body Lettering

AUTO SPKR STANDPIPE

*Auto Spkr lettering only

Optional Finish: -B Polished Brass
 -C Rough Chrome Plated
 -D Polished Chrome Plated

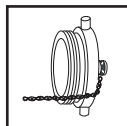
Threads: NST
 Other

Plugs with Chains and Break Caps - Used to keep fire dept. inlet connections free of debris and protect female threads.

Plugs with Chains

Model No.	Size	Type
<input type="checkbox"/> 6404	2 1/2"	Brass

Optional Finish:
 -B Polished
 -C Rough Chrome Plated
 -D Polished Chrome Plated



Threads: NST
 Other

Break Caps

Model No.	Size	Type
<input type="checkbox"/> 6406	2 1/2"	Aluminum
<input type="checkbox"/> 6407	2 1/2"	Plastic

Adjustable Plugs

Model No.	Size	Type
<input type="checkbox"/> 6408	2 1/2"	Aluminum
<input type="checkbox"/> 6409	2 1/2"	Plastic