



GUARDIAN

FIRE EQUIPMENT, INC.
MIAMI, FL

Ph. 800.327.6584 • Fax 800.827.3869

DETAIL AND SUBMITTAL SHEET

7100 Series - Monitor Nozzles

Project/Location: _____

Date: _____

Architect/Engineer: _____

Qty: _____

Contractor: _____

Appropriate Selection

Master Stream Nozzles

Used on water monitors to set flow rate, maximize reach and provide stream control. Models **7102-7120A** are suitable for water or pre-mixed foam solution. Models **7130-7135A** are suitable for water or foam (self-education).

Twist-control operation for variable fog angles and straight stream. Constant flows throughout spray patterns. Internal vanes reduce stream turbulence and improve reach. Selectable and single gallonage models. Spinning and fixed teeth models for wider water curtains. Grease fittings for lubrication. Female NST swivel inlet base.

Models **7130-7135A** are supplied with a 9' long pick-up tube.

Model No.	Flow (gpm)	Gallonage	Base	Construction
<input type="checkbox"/> 7102*	250 (200 or 350)	Single	1 1/2"	Brass Chrome Plated
<input type="checkbox"/> 7105*	500 (300 or 700)	Single	2 1/2"	Cast Brass
<input type="checkbox"/> 7105A*	500 (300 or 700)	Single	2 1/2"	Hard-Anodized Aluminum
<input type="checkbox"/> 7110**	750 or 1000	Single	2 1/2"	Cast Brass
<input type="checkbox"/> 7115	300-400-500-600	Selectable	2 1/2"	Cast Brass
<input type="checkbox"/> 7115A	300-400-500-600	Selectable	2 1/2"	Hard-Anodized Aluminum
<input type="checkbox"/> 7120	500-750-1000-1250	Selectable	2 1/2"	Cast Brass
<input type="checkbox"/> 7120A	500-750-1000-1250	Selectable	2 1/2"	Hard-Anodized Aluminum
<input type="checkbox"/> 7130	350 (3 or 6% foam)	Single	2 1/2"	Cast Brass
<input type="checkbox"/> 7130A	350 (3 or 6% foam)	Single	2 1/2"	Hard-Anodized Aluminum
<input type="checkbox"/> 7132	500 (1 or 3% foam)	Single	2 1/2"	Cast Brass
<input type="checkbox"/> 7132A	500 (1 or 3% foam)	Single	2 1/2"	Hard-Anodized Aluminum
<input type="checkbox"/> 7135	750 (1, 3 or 6% foam)	Single	2 1/2"	Cast Brass
<input type="checkbox"/> 7135A	750 (1, 3 or 6% foam)	Single	2 1/2"	Hard-Anodized Aluminum

* Provided with adjustable baffle to change flow rate

** Specify Flow: 750 GPM 1000 GPM

Deluge Tips

Used on water monitors to set flow rate and maximize straight stream reach. 2 1/2" NST rigid inlet base, cast brass construction

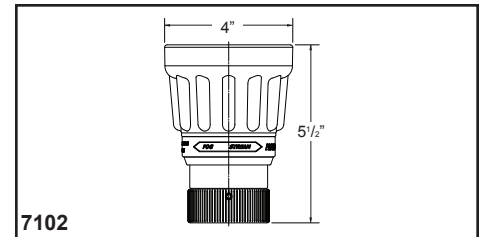
Model No.	Orifice
<input type="checkbox"/> 7140-1 1/4"	1 1/4"
<input type="checkbox"/> 7140-1 3/8"	1 3/8"

Model No.	Orifice
<input type="checkbox"/> 7140-1 1/2"	1 1/2"
<input type="checkbox"/> 7140-1 3/4"	1 3/4"

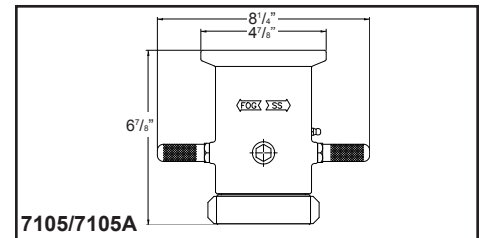
Stream Shapers

Used on water monitors to reduce stream turbulence and improve reach. 2 1/2" NST swivel inlet base, cast brass construction

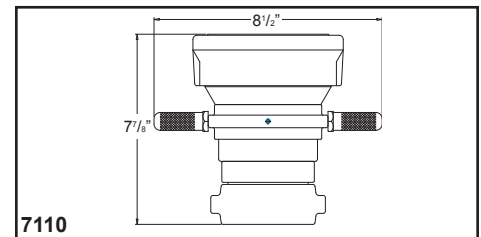
Model No.	Size
<input type="checkbox"/> 7150	4 1/2" Long
<input type="checkbox"/> 7155	15" Long



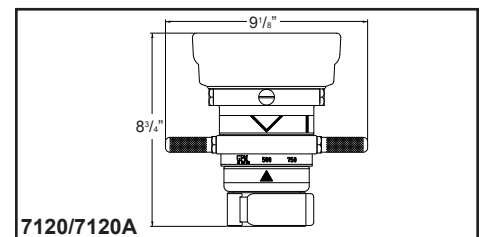
7102



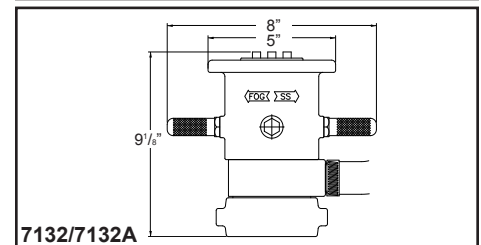
7105/7105A



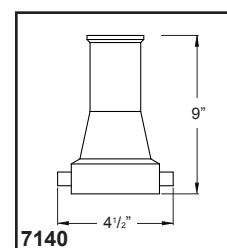
7110



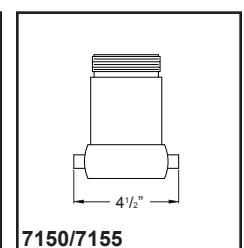
7120/7120A



7132/7132A



7140



7150/7155