



GUARDIAN

FIRE EQUIPMENT, INC.
MIAMI, FL

Ph. 800.327.6584 • Fax 800.827.3869

DETAIL AND SUBMITTAL SHEET

6700 Series - Flush Fire Pump Test Connections

Project/Location: _____ Date: _____

Architect/Engineer: _____

Contractor: _____

Appropriate Selection

Used to conduct flow tests on fire pumps.

Four and six-way test connections feature brass bodies (straight, angle or end pattern) with female NPT inlets and outlets.

Standard components, all connections:

Hydrant outlet snoots (3" female NPT x 2 1/2" male NPT), N.R.S. loose bonnet gate valves (2 1/2" female NPT x 2 1/2" male hose thread), caps with chains and identification plate lettered "FIRE PUMP TEST". Cast brass construction, standard.

Four and Six-Way Connections

Model No.	Outlet	Size	A	B	C	D
<input type="checkbox"/> 6743	Angle	6" x 2 1/2" square, 4-way	---	---	---	---
<input type="checkbox"/> 6744	Back	6" x 2 1/2" in-line, 4-way	23 5/8"	5 5/8"	---	---
<input type="checkbox"/> 6745	Angle	6" x 2 1/2" in-line, 4-way	23 5/8"	---	7 5/8"	---
<input type="checkbox"/> 6746**	End	6" x 2 1/2" in-line, 4-way	---	---	---	25"
<input type="checkbox"/> 6764**	Back	8" x 2 1/2" in-line, 6-way	44 1/2"	11 5/8"	---	---
<input type="checkbox"/> 6765**	Angle	8" x 2 1/2" in-line, 6-way	44 1/2"	---	10 7/16"	---
<input type="checkbox"/> 6766**	End	8" x 2 1/2" in-line, 6-way	---	8 5/8"	---	45"

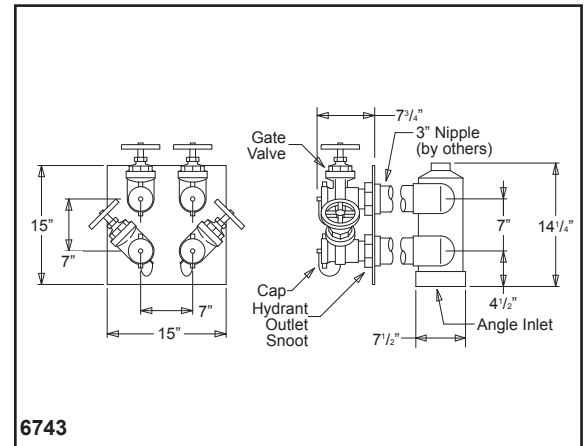
** With steel body only

Optional Finish: -B Polished Brass
 -C Rough Chrome Plated
 -D Polished Chrome Plated

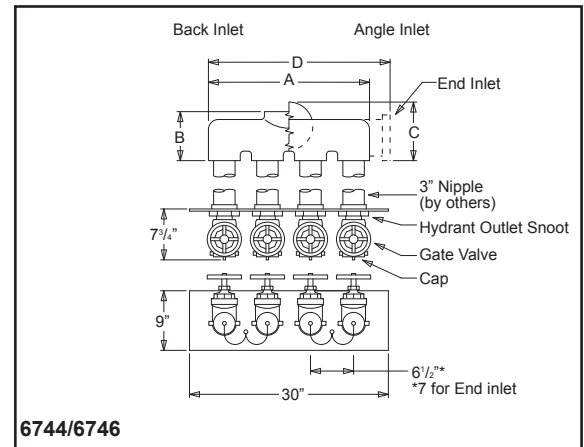
Threads:
 NST
 Other

Component Variations

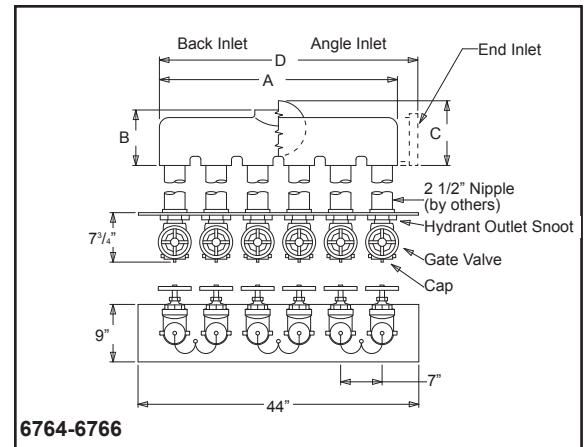
- ST Bodies fabricated of schedule 40 steel with female NPT inlets and 2 1/2" female NPT outlets* (7" center lines)
 * 2 1/2" x 2 1/2" outlet snoots required
- 1 Standard components, except hydrant outlet snoots (3" female NPT x 2 1/2" male hose thread), and less valves
- 2 Standard components except hydrant outlet snoots (3" female NPT x 2 1/2" male hose thread), and N.R.S. swivel inlet gate valves (2 1/2" female hose thread x 2 1/2" male hose thread).
Swivel inlet gate valves always furnished cast brass.



6743



6744/6746



6764-6766